



༄། འབྲུག་ཁྲུལ་ཉེན་སྲུང་ལས་འཛིན་ཚོང་།

ROYAL INSURANCE CORPORATION OF BHUTAN LTD.



AUCTION OF IMMOVABLE AND MOVABLE PROPERTIES, RICBL (02.04.2025)

SN	Programme	Time	Remarks
1	Registration of the Bidders	09:00am - 10:00 am	Bidders will register in the counter and avail token from the counter
2	Settling the bidders and the auction committee members in the Training Hall.	10:00am - 10:30am	All the participants will move to the Training Hall and settle down.
3	Welcome Note	10:30am	Welcome Speech will be delivered by Mr. Jambay Wangchuk, Unit Head, OBS
4	Key note speech	10:40am	Key Note Speech will be delivered by Offtg. Director, CSD
5	Commence the auction	10:45am- 12:30pm	Auction will be led by Mr. Jambay Wangchuk, Unit Head, OBS.
6	Negotiation, if any	12:30pm	
7	End of Auction	01:00 PM	



1. 25.21 dec land and T/No. 3489, P/No. PGT-2299, Gurungdara, Urban, Phuntsholing, Chukha

- The land is situated at Gurungdara which is 2kms away from Bhalujhora bridge.
- It is connected by motorable road, and is classified as Urban village low destiny(UVLD).



2. 106.9 dec land T/No. 3488, P/No. PGT-2300, Gurungdara, Urban, Phuntsholing, Chukha

- The land is situated at Gurungdara which is 2kms away from Bhalujhora bridge.
- The land is fully planted with betel nut trees and is classified as Green zone (E1).



3. 307 dec land, T/No. 1534, P/No. KAN-1511, Trashigang, Rural, Khangma, Kanglung.

- The land is situated below Regional centre machinery unit, Khangma, under Kanglung gewog.
- It is approximately 6kms away from gewog centre and its classified as Rural land class C.



4. 7 dec land T/No. 1100, P/No. SHE-2006 Mongar, Soenakhar, Shermung gewog.

- The land is situated at Soenakhar under Shermung gewog office.
- It is approximately 58kms from Mongar town and around 20 kms from Yadhi.
- It is connected with GC road.



5. 20.2 dec land T/No. 1100, P/No. SHE-2009, Mongar, Soenakhar, Shermung gewog.

- The land is situated at Soenakhar under Shermung gewog.
- It is approximately 58kms from Mongar town and around 20 kms from Yadhi.
- It is connected with GC road.



6. 57.2 dec land T/No. 1100, P/No. SHE-2010, Mongar, Soenakhar, Shermung gewog.

- The land is situated at Soenakhar under Shermung gewog.
- It is approximately 58kms from Mongar town and around 20 kms from Yadhi.
- It is connected with GC road.



7. 27.3 dec land T/No. 1100, P/No. SHE-3383, Soenakhar, Shermung gewog, Mongar

- The land is situated at Soenakhar under Shermung gewog.
- It is approximately 58kms from Mongar town and around 20 kms from Yadhi
- It is connected with GC road.



8. 120.9 dec land T/No. 1100, P/No. SHE-3385, Soenakhar, Shermung gewog. Mongar.

- The land is situated at Soenakhar under Shermung gewog.
- It is approximately 58kms from Mongar town and around 20 kms from Yadhi.
- It is connected with GC road.



9. 17.6 dec land T/No. 1100, P/No. SHE-3380, Soenakhar, Shermung gewog. Mongar.

- The land is situated at Soenakhar under Shermung gewog.
- The land is approximately 58kms from Mongar town and around 20 kms from Yadhi.
- It is connected with GC road.



10. 15 dec land, T/No. 1100, P/No. SHE-3382, Soenakhar, Shermung gewog, Mongar.

- The land is situated at Soenakhar under Shermung gewog.
- The land is approximately 58kms from Mongar town and around 20 kms from Yadhi.
- It is connected with GC road.



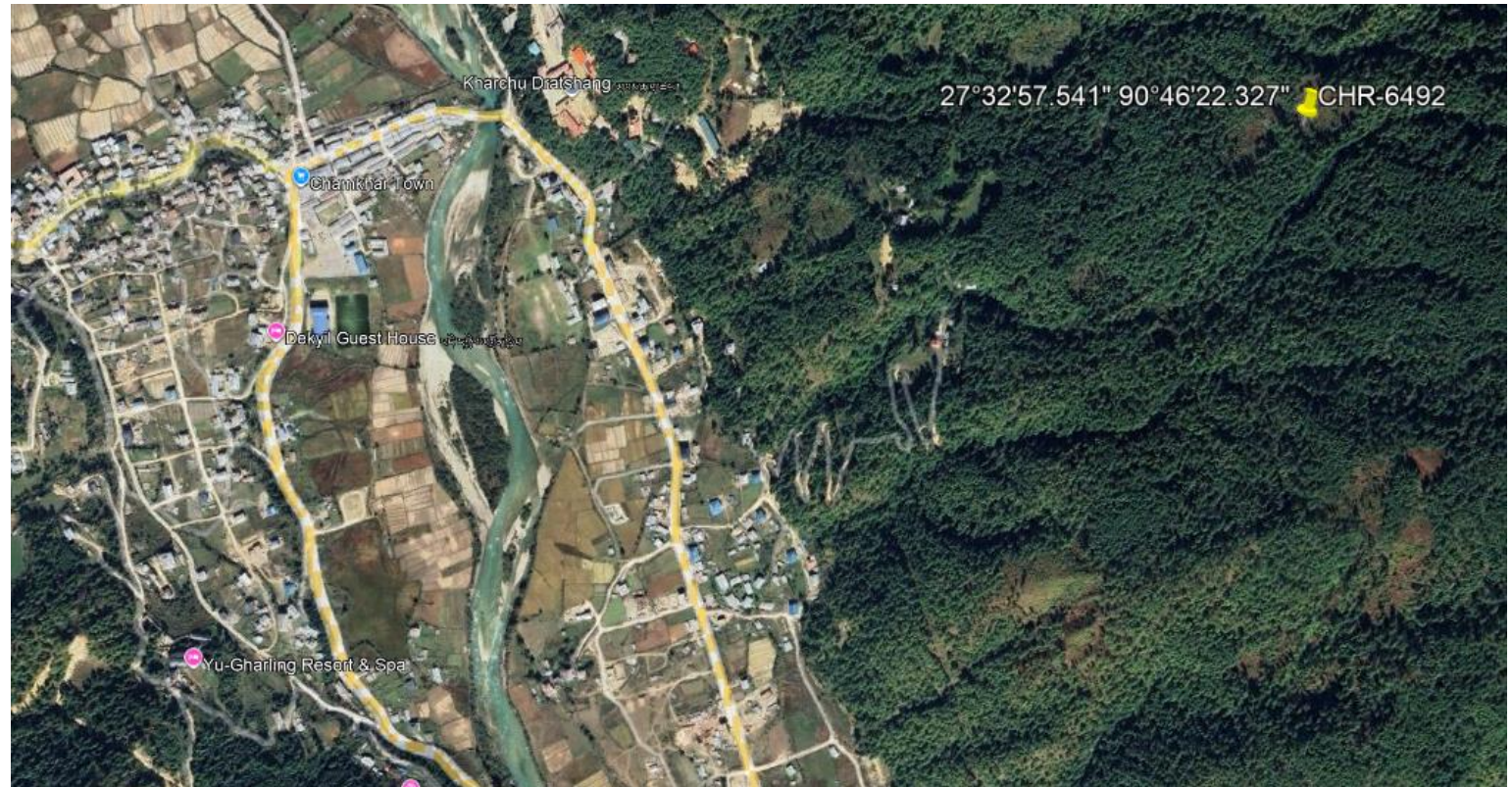
11. 72 dec land T/No. 2029, P/No. CHR-6486, Bumthang, Worgangwoma, Chokhor.

- The land is situated Worgangwoma which is 600 meters above Gongkhar Goenpa.
- According to existing records and zoning regulation, the land is classified as Rural.



12. 72 dec land T/No. 2030, P/No. CHR-6492, Bumthang, Worgangwoma, Chokhor.

- The land is situated Worgangwoma which is 600 meters above Gongkhar Goenpa.
- According to existing records and zoning regulation, the land is classified as Rural.



13. 110 dec land T/No. 1018, P/No. TAD-1790, Samtse Rural, Tading gewog.

- The land is situated at Tading gewog, 16km drive from Phuntsholing town and 12-minute drive from Tading gewog centre.
- The land falls under Rural.



14. 256.8 dec land T/No. 1223, P/No. KAN-3793, Yonphula, Trashigang.

- The land is situated at Yonphula, approximately 33Kms away from Trashigang town.
- It is characterized by the gentle slope and lies beneath the farm road.



15. Land, 157.9 dec, T/No. 472, P/No. LEO-1592, Dekiling, Rural, Sarpang.

- The land is situated at Jigmeling, under Dekiling Gewog.



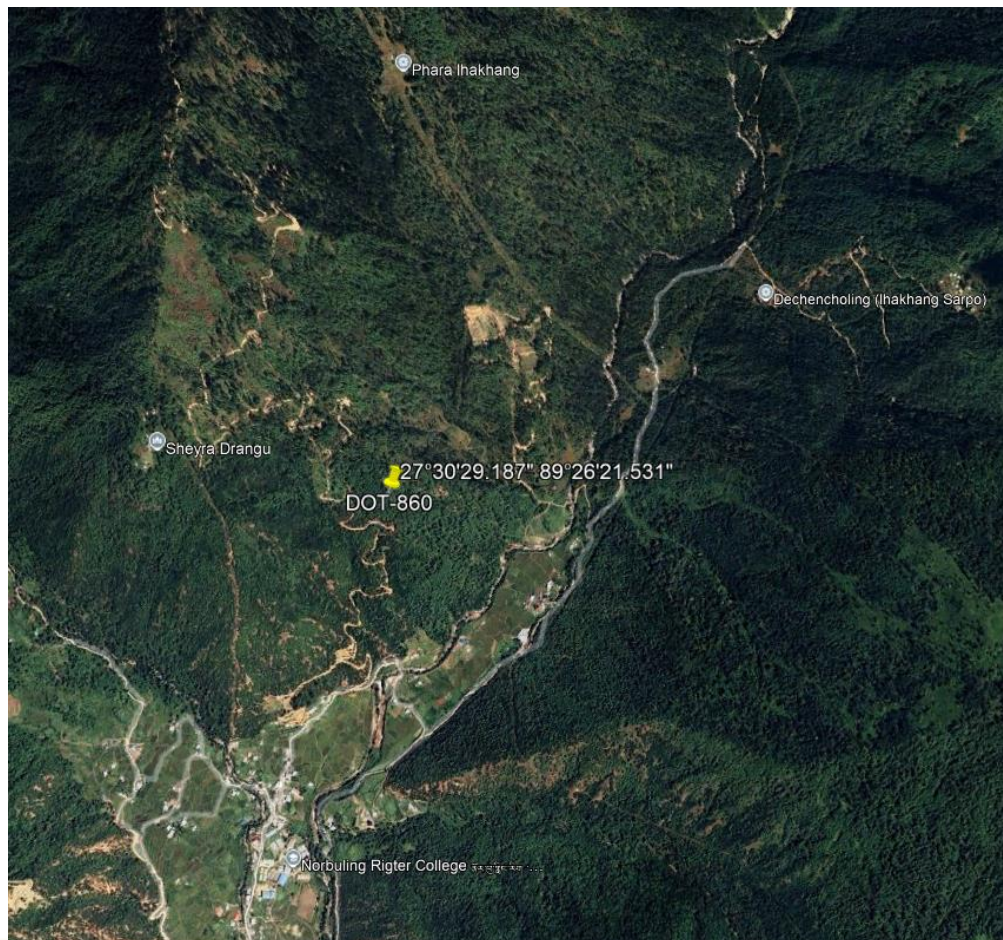
16. 189 Dec land on Thram No.7, Plot No. DOT-862, Paro, Dotaeng.

- The land is situated about 9kms away from the Paro Town at Phooshar on the way to Tsendu Goenpa.
- It is not connected with electricity and water.
- The said land is covered with pine trees.
- All the land is located at the same area.



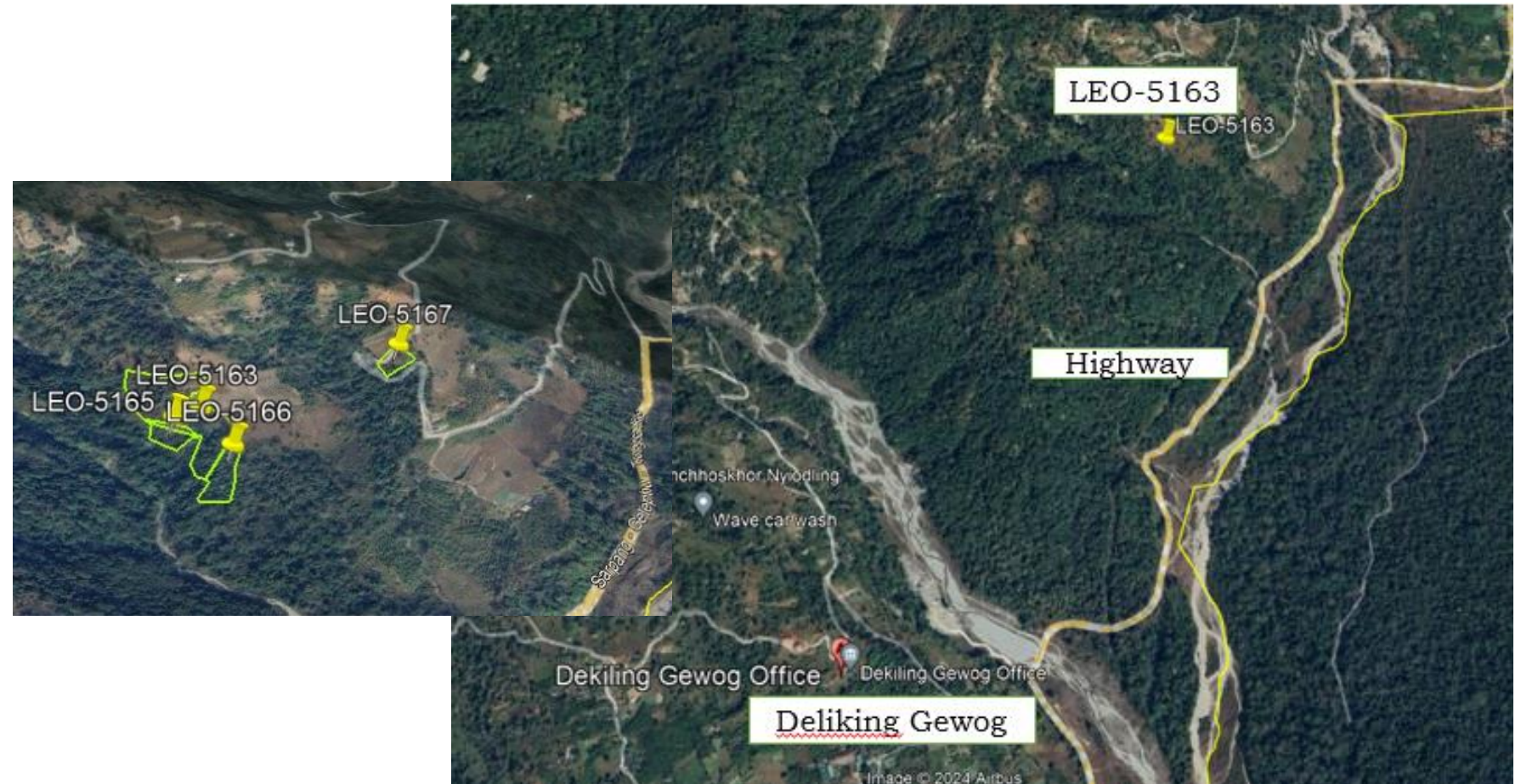
17. 208 dec land on Thram No. 8, plot No. DOT-860, Paro, Dotaeng.

- The land is situated about 9kms away from the Paro Town at Phooshar on the way to Tsendu Goenpa.
- The said land is not connected with electricity and water.
- The said land is covered with pine trees.
- All the land is located at the same area.



18. Land, 305 dec, T/No. 3254, P/No. LEO-5163, Sarpang, Rural, Dekiling

- The land is situated at Nubgang, Dekiling, which is approximately about 19 km from Gelephu town.
- The said land is approximately 1.3 km away from Sarpang-Gelephu highway.



19. Land, 47.8 dec, T/No. 3254, P/No. LEO-5167, Sarpang, Rural, Dekiling

- The land is situated at Nubgang, Dekiling, which is approximately about 19 km from Gelephu town.
- The said land is approximately 1.3 km away from Sarpang-Gelephu highway.



20. Outlander, 2011 Model, BP-1-D5700, Running condition, Thimphu.



21. Sany Excavator, 2017, BP-1-A0158, Running, Dagana, Dagapela.



22. Sany Excavator, 2017, BP-1-A0157, Running, Dagana, Dagapela.



23. Sany Excavator, 2017, BP-1-A0156, Running, Dagana, Dagapela



24. FX-DRILL50 with compressor 2017, Offroad, Dagana, Dagapela.



25. JCB Backhoe Loader, 2017, BP-3-A0069, Running, Dagana, Dagapela.



26. Sany Excavator, 2017, BP-1-A0159, Running, Dagana, Dagapela.



27. Sany Excavator, 2017, BP-1-A0160, Running, Dagana, Sisithang



28. Sany Excavator, 2017, BP-1-A0161, Offroad, Dagana, Sisithang



29. Sany Excavator, 2017, BP-1-A0162, Running, Dagana, Dagapela.





༄། འབྲུག་གྲུབ་ཉེན་སྲུང་ལས་འཛིན་ཚོང་།
ROYAL INSURANCE CORPORATION OF BHUTAN LTD.



NEGOTIATION



Call us @1818 “Your partner for growth and security”





༄། འབྲུག་གྲུབ་ཉེན་སྲུང་ལས་འཛིན་ཚོང་།
ROYAL INSURANCE CORPORATION OF BHUTAN LTD.



བཀའ་འདྲིན་ཚེ།

THANK YOU



Call us @1818 “Your partner for growth and security”

